

Welcome to

Catboat Cottage



Est. 2005

CONTENTS

- ★ Getting There
- ★ Parking
- ★ Check-in
- ★ Cottage Information
- ★ Outdoor Space and Dogs
- ★ Emergency Information
- ★ Special Requests
- ★ Check-out
- ★ History of Catboat Cottage
- ★ Appledore History
- ★ Appledore Today
- ★ Days Out Guide:
 - ★ Beaches
 - ★ Places to Visit
 - ★ Eating Out and Takeaways
- ★ Useful Telephone Numbers
- ★ What's On?



Est. 2005



Welcome to Catboat Cottage

Catboat Cottage, 114 Irsha Street, Appledore, North Devon EX39 1RY

Thank you for choosing Catboat Cottage, I really appreciate it and will do all that I can to ensure that you have a great stay. I would like to ask you to take a few moments to read through this welcome guide. In here, you will find all the key information about the property including emergency phone numbers. The second half of the pack features personal recommendations to help you plan your stay including places to eat and things to do.

If you need anything to make your stay more comfortable, please don't hesitate to get in touch with Holly on 0776 666 2407

I would also like to thank you on behalf of all the other local businesses that you might enjoy whilst you are there, the local pubs, restaurants, and visitor attractions. Your spend is critical to the long-term survival of these businesses. Local spend alone is insufficient to support them and they are reliant on guests like you to sustain our vibrant local visitor economies.

I hope that you will continue to holiday in the UK and support the Great Staycation. Have a relaxing and enjoyable stay.

Warm regards

Holly



From the M5:

- ★ Leave the M5 at Junction 27, then take the A361 link road to Barnstaple
- ★ Stay on the A361 for approximately 26 miles until you reach the A39.
- ★ Take the A39 towards Bideford. Cross the estuary bridge.
- ★ At the roundabout, take the 3rd exit into Heywood Road (signposted A386, Appledore).
- ★ Go past the Durrant House Hotel and turn right into Churchill Way.
- ★ Stay on this road. (Once past Broad Lane, follow the blue route on the larger map). Marine Parade and the estuary are in front of you.
- ★ Continue round the sharp left-hand bend (the Quay is on your right).
- ★ Go past the Quay Car Park, turn right (and down) into Irsha Street. Continue for approximately 150 yards. Catboat Cottage (pink house) is on your left. You can stop and unload luggage into the porch; however, the driver needs to stay with the vehicle in case the emergency services or RNLI need access.

A large, multi-masted sailing ship is beached on a dark, pebbly shore at dusk. The ship's reflection is visible in the calm water. The sky is a deep blue, and the horizon is visible in the distance.

Parking

Free Parking:

Continue to the end of Irsha Street, (which is one way)

Turn left and left again into Torridge Road.

Continue to the end near a garage with double metal doors on your left; park on the street as near as you can – but please **don't park** in front of the garage doors.

Take a short cut down the footpath, adjacent to Catboat Cottage, back onto Irsha Street.

Alternatively, the Quay Car Park (Churchfields) offers free parking from 6pm to 8am.

Car Parks:

There are three pay and display car parks: Churchfields and West Appledore are 160 yards away, and Odun Road Car Park is 800 yards away.

All offer hourly, daily, and weekly parking. A weekly ticket costs £22.50 - £30 depending on the time of year. Alternatively, you can purchase a tourist permit online for £45. (This can be used in other Torridge car parks.)

Blue badge holder bays are available, as well as charging facilities for electric vehicles.



Check-in

CHECK-IN: from 4pm

We aim to get guests settled in before 4pm but I will call you on the day as soon as the cottage is ready, giving you the combination to the key safe. For your security, once the keys have been retrieved, please remember to scramble the combination afterwards.

Shopping Delivery Information:

For ease, lots of our guests pre-order a shopping delivery and you are welcome to organise this. However, please do make sure the delivery time is after check-in, when the first guest has arrived, as we're unable to accept shopping on your behalf.

Pre-book a Door-to-Door Delivery of Local Produce:

We're often asked about local produce so why not try our fabulous [John's of Appledore?](#)

A Few House Rules:

- ★ Please remove dirty shoes or high heeled shoes on entry.
- ★ Breakages happen, so please don't worry. Please send me a text as soon as possible to let me know so that I can arrange replacements. (A vacuum cleaner is provided for guests to use for any breakages or spillages.)
- ★ Please do not smoke or vape inside the cottage; this will trigger the smoke alarms.
- ★ Please do not bring any candles, tea lights or incense sticks. For fire safety, they are not allowed in the cottage.
- ★ We kindly ask that you bring your noise inside after 10pm, so that neighbours and residents are not disturbed after this time.
- ★ Dogs are very welcome but please always observe our booking terms.
- ★ Most importantly: relax, unwind, and enjoy our lovely cottage!



Cottage Information

Linens:

Fresh bedlinen – 2 pillows per guest plus duvet relating to bed size.
Fresh towels/tea towels – 1 bath towel per guest. 1 hand towel in each bathroom.
We kindly ask guests to bring their own beach towels.

Household Items: We provide a few starter items at check-in

Kitchen

Washing-up liquid & dishcloth
Kitchen roll & bin bags
Dishwasher tablets
Laundry tablets & fabric softener
Tassimo Coffee pods

Bathroom (items are per bathroom)

1 toilet roll
1 hand soap
1 body wash, shampoo & conditioner

A hairdryer is provided in each bedroom except the twin bedroom.

Internet:

The router name is BT – J6AJFN and the password is MkJLv7FUxbMK6

Phone Signal:

Network connection in Appledore can be patchy. You might get a signal upstairs or in the garden. You could also try WIFI calling if your provider supports this.

Telephone:

01237 478146 (for incoming and 999 calls only.) Please ensure that anyone using this number knows your arrival/departure dates to prevent disturbing other guests.

Hot Water:

Hot water is heated on demand whenever a tap is turned on.

Heating:

The heating is on a schedule. If you need this altering, please contact Holly. The thermostat is situated on the wall under the stairs. If you wish to adjust it: turn the dial on the front of the thermostat to the desired temperature. To boost the heating, press the button on the top right-hand side of the thermostat. Turn the dial to the desired temperature, then press the green illuminated tick button to confirm.

Fires:

Dining room – gas fire has controls on the right-hand side of the fire. Turn on the gas and press the ignite button. Slowly turn the knob until flames appear.

Sitting room – electric fire has an on/off switch on the side of the fire and operates using the white Gazco remote control. Desired room temperature can be set. (Please do not open the door of the fire; small items may pose a choking hazard for younger guests.)

Downstairs bedroom – electric fire has an on/off switch.

Echo Speaker:

Alexa is voice activated and can play music, tell you the weather/time, set a timer and much more. To operate say “Alexa” and then ask your question.

Recycling:

Food waste is collected weekly and all other recycling - glass, tins, plastic and paper is collected fortnightly. Boxes need to be put on the doorstep only - otherwise they go astray!

After Thursday (or if you're staying during a week when there is no collection) please do the following:

- ★ Recycling should go into recycling box. General waste should be in sealed black bags in the dustbin in the courtyard.
- ★ After Thursday's collection, please include your food waste with your general waste.

This will be collected at the end of your stay and will be recycled.

NB: To help the environment, we are reducing our single use plastics. We refill bathroom soaps and shampoos etc so please don't throw away the containers.



Outdoor Space and Dogs

Rear Garden:

- ★ Secure garden with high stone wall and fencing.
- ★ Courtyard patio ideal for a couple of early risers to sit out and have a coffee.
- ★ Paved terraced garden on first floor level.
- ★ Dining table and seating for 8.
- ★ Outside tap to wash wetsuits etc.
- ★ The rear garden enjoys the sun all day, so it's a real sun trap.

Dogs:

Water and food bowls are provided along with temporary dog holiday tags. Please feel free to use them but don't forget to return them.

For the comfort of all our guests we request the following:

- ★ Guests must bring their dog's bed or basket for snoozing.
- ★ If any fouling does occur in the courtyard or patio garden, this must be cleared up without delay.
- ★ Dogs must not be left alone in the cottage or garden at any time.
- ★ Dogs must not lie on beds or furnishings, and any hair must be cleaned up before departing.

Please see our booking terms for all information regarding bringing your four-legged friend.

Property Quirks:

- ★ As a 200-year-old property that has been extended and modernised, Catboat Cottage is on different levels.
- ★ There are steps between most of the rooms, ranging from a couple of inches to full step height.
- ★ The steps leading up to the terraced garden differ in height so they might not be suitable unsupervised for those who are less agile.

It's worth checking out our [Accessibility Guide](#), which includes floor plans to help you plan your stay.

The Beach:

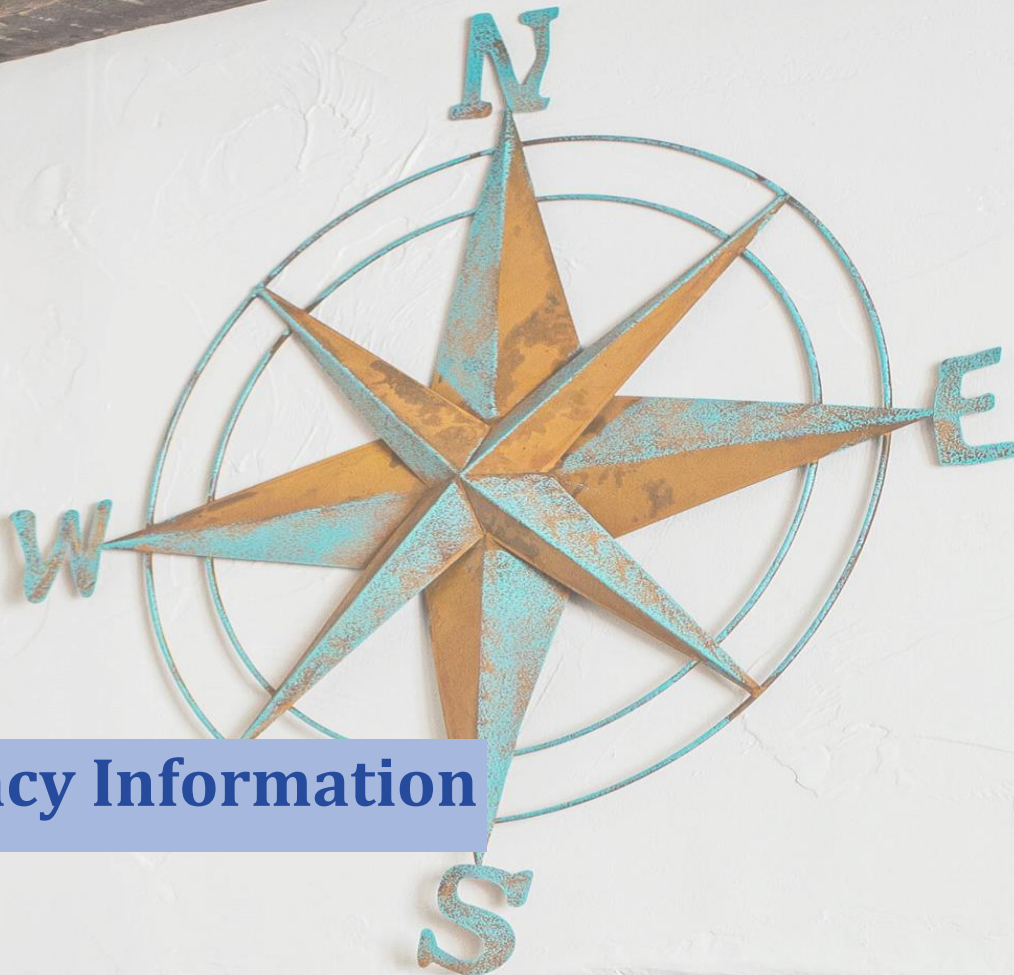
Feel free to take your morning coffee down onto the beach; please just remember to bring back your cups.

Be aware that there are strong currents on the estuary and the tide can move very quickly. There are little nooks along the coast where you could get trapped.

Please do not attempt to swim or walk over to Instow at low tide. Whilst it looks tempting, it is extremely dangerous.

Always check the [local tide times](#).

If you need to contact the Coastguard or the RNLI, dial 999 and ask to be connected to the Coastguard.



Emergency Information

Emergency Contact Details

In the event of any emergency with the property during your stay, please contact Holly Faulconbridge on 0776 666 2407. Alternatively, please contact our housekeeper, Clare, on 07931 115028.

Water Information

In the event of a water leak/burst pipe, the water must be turned off immediately to prevent further damage. The stop tap is located in the tall kitchen cupboard that houses the boiler, on the bottom right-hand side.

Gas Information

If you smell gas or hear the Carbon Monoxide alarms, please evacuate the cottage as quickly as possible leaving the doors and windows open.

Do not use any light switches.

Contact the Gas Emergency Helpline: 0800 111 999

To disconnect the gas supply - the gas valve is in the cupboard under the television in the sitting room.

Electricity Information

The fuse box is in the porch.

Fire Safety and Evacuation

(last updated October 2024)

For fire safety information, please refer to [The Regulatory Reform \(Fire safety\) Order 2005](#)

In the event of a fire:

1. EMERGENCY CONTACTS

Please contact the following:

- 1) The Emergency Services: call 999
(Fire Rescue Service, Police and Medical Services)
- 2) Holly Faulconbridge: 0776 666 2407
(Owner)
- 3) Clare Dawson: 07931 115028
(Housekeeper)

The address is 114, Irsha Street, Appledore, North Devon.
What 3 Words is: Magpie. Amount. Quaking.

It is essential that you contact the emergency services in the event of a fire.

The mobile signal in Appledore can fluctuate so guests may use the landline if you need to contact the Emergency Services.

2. EVACUATION PLAN

Evacuate Catboat Cottage as quickly as possible using the front door that leads onto Irsha Street.

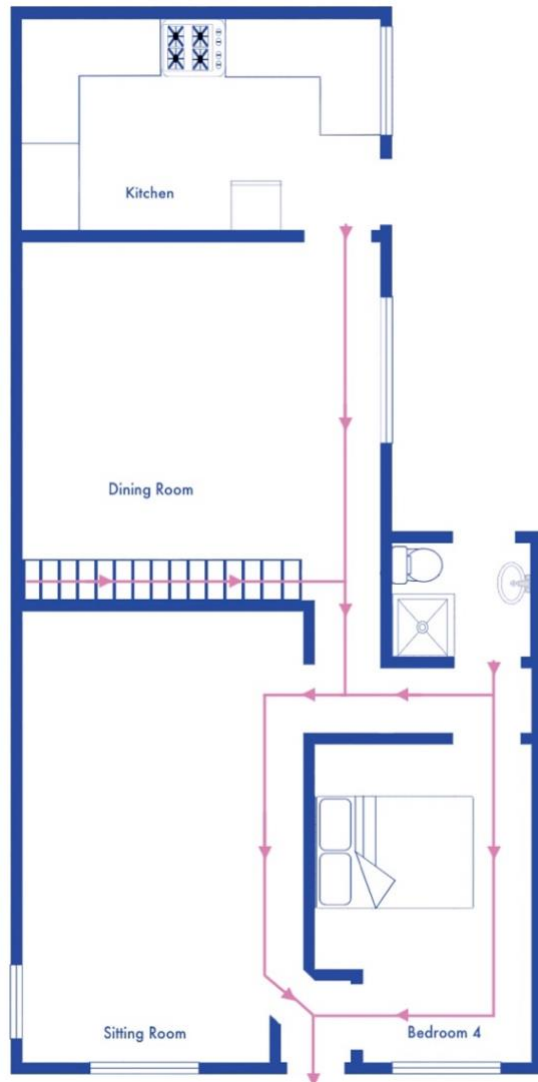
Please refer to the escape plans on the next page for the quickest escape route.

Assemble outside the property at a safe distance and wait for the Emergency Services to arrive.

Do not attempt to extinguish the fire.

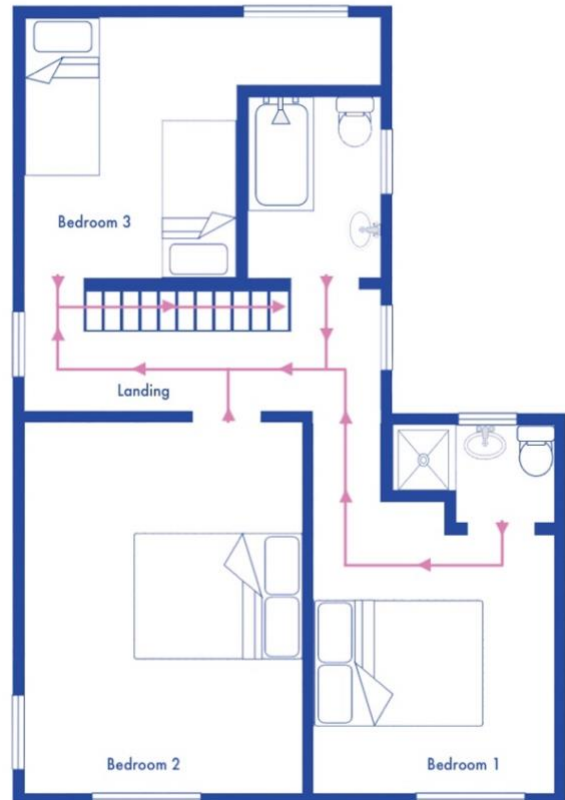
3. FLOOR PLANS

Ground Floor



Irsha Street

First Floor



4. ALARMS AND FIRE EXTINGUISHERS

Smoke alarms are fitted in the dining room, porch, the upstairs landing and in each bedroom.

A heat and smoke alarm are fitted in the kitchen and there are carbon monoxide alarms fitted in the kitchen and dining room.

If there is a fire all the fire alarms will sound. If there is carbon monoxide present the alarm in that area will sound.

On hearing either alarm, please evacuate the property.

If the alarm sounds and there is not a fire, this is called a false alarm. The alarms can be silenced by pressing the button on the face of the alarm. If the alarm is pressed to silence by mistake or there is still smoke present, the alarm will become active again within one minute. False alarms need to be logged so please contact Holly Faulconbridge if this happens.

The Carbon Monoxide alarm will not re-set until the room is back to normal oxygen levels.

A P50 fire extinguisher is provided and located in the kitchen area. This is a multi-fire extinguisher meaning it can be used on a range of different fires. We really recommend that you don't tackle a fire in the cottage, but in the event you feel confident, or the fire is in the very early stages, or you have prior training, then you should adopt the PASS method.



Please note, if you find the extinguisher missing, damaged or you accidentally knock the extinguisher, please inform Holly Faulconbridge as soon as possible.

A fire blanket is located on the kitchen wall next to the back door. If you need to use the fire blanket during your stay, please contact Holly Faulconbridge.



Plug-in torches (emergency lighting) have been provided to light the landing, stairs, and evacuation route in the event of a fire or power failure. Please do not remove these unless they are needed in an emergency.

There are escape routes attached to the back of each bedroom door. Please take time to familiarise yourself with your escape route.

5. FIRE SAFETY RULES

As part of our terms and conditions, guests agree to do everything they can to prevent a fire. For your safety, it is important to note the following:

- ✦ Do not use candles or tea lights (or anything similar) indoors.
- ✦ Do not smoke inside the cottage.
- ✦ Do not put cigarette 'ends' in the inside bin.
- ✦ Do not interfere with the alarms or other fire safety equipment provided.
- ✦ Do not leave cooking unattended.
- ✦ Do not place any flammable items (including towels, bedding, or clothes) in the boiler cupboard in the kitchen.
- ✦ Do not place anything on top of the electric or gas stoves in the dining room, sitting room, or downstairs bedroom.
- ✦ Do not leave any personal items charging overnight or when you are not in the cottage.
- ✦ Do not use any of your own items, other than small personal items such as phone chargers, laptops, and hair related products without prior written agreement.
- ✦ Do not overload electrical outlets.
- ✦ Do not use extension leads.
- ✦ Do not leave the washing machine or tumble dryer on after you have gone to bed or when you are out of the cottage.
- ✦ Do not charge or store electric bikes in the cottage or charge EV cars via windows.
- ✦ Do not store buggies, bikes, scooters, and roof/bike racks in the cottage.
- ✦ Close all the doors at night to restrict potential fire to spread from room to room.

6. OUTDOOR FIRE SAFETY RULES

- ✦ Do not use candles or tea lights (or anything similar) in the garden.
- ✦ Do not smoke in the garden.
- ✦ Do not use a BBQ, fireworks, or paper lanterns in the garden.

7. FIRE HAZARDS

Please ensure the following:

- ★ All doors are closed at night to restrict potential fire from spreading.
- ★ All electrical appliances (excluding fridge freezer, emergency lighting, WI-FI router, landline, and Hive) should be switched off at the socket overnight or when you are not in the cottage.
- ★ Items such as baby monitors should be left on hard surfaces and not on beds or other soft furniture.
- ★ The cooker is switched off when not in use and no items are left on top of the hob.
- ★ The gas fire and electric stoves are switched off when not in use and no items are left on top of any of these appliances.
- ★ Please keep flammable items (towels, bedding, clothes) away from all heat sources: the boiler cupboard and oven and gas hob in the kitchen, the electric and gas stoves in the dining room, sitting room and downstairs bedroom.
- ★ The route from all rooms to the front door should always be kept free and should not be obstructed with any items that may prevent or slow down your exit in the event of an evacuation.

8. FIRE PREVENTION

- ★ Do not use candles or tea lights (or anything similar) indoors or in the garden.
- ★ Do not smoke inside the cottage or in the garden.
- ★ Do not put cigarette 'ends' in the inside bin.
- ★ Do not interfere with the fire alarms or other safety equipment provided.
- ★ Do not leave cooking unattended.
- ★ Do not place any flammable items (including towels, bedding, or clothes) in the boiler cupboard in the kitchen.
- ★ Do not place anything on top of the electric or gas stoves in the dining room, sitting room, or downstairs bedroom.
- ★ Do not leave any personal items charging overnight or when you are not in the cottage.
- ★ Do not use any of your own items, other than small personal items such as phone chargers, laptops, and hair related products without prior written agreement.
- ★ Do not overload electrical outlets.

- ★ Do not use extension leads.
- ★ Do not leave the washing machine or tumble dryer on after you have gone to bed or when you are out of the cottage.
- ★ Do not charge or store electric bikes in the cottage or charge EV cars via windows.

9. LOCAL FIRE REGULATIONS

Devon and Somerset Fire Rescue Service recommend that you do not use BBQ at the beach or in the countryside. If you choose to use a BBQ, there are some restrictions in place on where they can be used, so please check local signage before using one.



FIRE ACTION NOTICE

	<p>DO NOT TRY TO PUT THE FIRE OUT. Leave the room where the fire started and keep the door closed!</p>
	<p>RAISE THE ALARM - SHOUT "FIRE!"</p>
	<p>GET EVERYONE OUT. Closing the door behind you.</p>
	<p>WAIT OUTSIDE. a safe distance away from the building.</p>
	<p>CALL THE FIRE SERVICE - DIAL 999. Provide the address below.</p>
	<p>NOTIFY THE OWNER. Use the contact details below.</p>

ADDRESS:
Catboat Cottage
114 Irsha Street
Appledore
North Devon
EX39 1RY

What 3 Words: magpie.amount.quaking

CONTACT:

- Emergency Services: 999
- Holly Faulconbridge: 0776 666 2407
- Clare Dawson: 07931 115028



Special Requests

Special Events:

We love a good celebration and we're always here to help you make the most of yours!

It's not always that easy when you're away from home and want to keep the lid on a surprise. Whether you want a luxury picnic, balloons on arrival or a delicious homemade cake, please get in touch with Holly at catboatcottage@gmail.com and we can discuss your ideas.

Any optional extras will be quoted and agreed before your stay and charged accordingly.

Inclusivity:

We welcome everyone to Catboat Cottage and if there is anything we can do to make your stay more comfortable, please get in touch with Holly at catboatcottage@gmail.com to discuss your needs.



Check-out

Departure Details:

Check-out is by 10am.

Upon departure, we kindly ask the following of our guests:

- ★ Please ensure you leave the cottage as you found it.
- ★ Please put any furniture back as you found it.
- ★ Please ensure all used crockery, glasses and cutlery have been washed in the dishwasher and returned to the cupboard.
- ★ Recycling and general waste should be separated into black bags and the recycling box. Please put black bags in the bin in the courtyard. Food waste should be included with general waste.
- ★ Please remove all bedlinen from beds (leaving mattress and pillow protectors) and place in the laundry bags provided, along with the towels.
- ★ Dog owners: please ensure that you have thoroughly cleared up any dog hair.
- ★ Check windows and doors are secure
- ★ Ensure that you have all your personal possessions with you.
- ★ Please return the keys to the key safe on departure. Guests are requested to scramble the combination after using the key safe.



History of Catboat Cottage

Catboat Cottage was built around 1850 and is now protected as part of the conservation area of West Appledore.

Many of the building materials are believed to be found on the beach, beams from ships and shipwrecks were often used. Cob and timber walls, ceilings and fireplaces tell a historical tale of upcycling. Examine the hand-blown glass in the windows; the sun streaming through the stained glass on the landing is a joyous sight. The culmination of these architectural anomalies, along with the original floorboards and sash windows preserve our cottage in its own time capsule.

During the restoration of the neighbouring cottage, a doorway was found in between their living room and our downstairs bedroom. Despite the kitchen and downstairs bathroom being later additions, it makes you wonder what the origins of such a large property were. Allegedly a local inn or license holder, the square alcove in the sitting room believed to be the original serving hatch onto Irsha Street. This was for the undesirables who were not allowed entry into the pub!

In 2003, the cottage underwent a major renovation with central heating installed for the first time. Lovingly restored, many period features were retained including exposed beams, historical fireplaces, and roof trusses. Some of the cob walls were left exposed to tell their historic tale.

During the Lockdown closure, the cottage had a makeover - my mission being to support small local businesses. Amongst the treasures discovered were fabrics from Cornwall, a bespoke mirror from a local craftsman, plus mixed media and artwork including 'The Grand Expedition' by Gerrard Lindley, an artist in the village.



Appledore History

Appledore is the small village with a big history! First documented in 1135 as “Apildare”, legend has it that in 878 AD Hubba the Dane landed at Appledore before he was defeated in battle.

Centuries of shipbuilding form the foundations of this seafaring community. In recognition of the role of Appledore’s sailors and ships against the Spanish Armada, Queen Elizabeth I granted it a free port - a status which remains in place today.

Lives of men and women in the late 1800s differed hugely. Sailors visited places such as Singapore and Bombay, whilst one villager (who married a mariner in 1892) was proud, aged 89, that she’d never once left the village!

During the 1800s, there were at least 20 known pubs in Appledore. Householders could also apply for a licence to buy a barrel of beer to sell from their own home. In the 1930s, Henry Williamson, whose ‘Tarka the Otter’ was set in the estuary, regularly frequented the pubs.

The children’s book ‘The Family from One End Street’ by Eve Garnett was named after the quirky house at the bottom of One End Street. It won the Carnegie Medal in 1937, beating other classics including Tolkien’s ‘The Hobbit’.

Irsha Street used to be a rough-and-ready place associated with witchcraft and prostitution. The small footpath next to the cottage is called White Horse Lane, and the only explanation is a white horse used to live in stables at the top of the lane. Opposite and to the left of the slipway was originally the Gaiety public hall (1893), it later became the Gaiety cinema from 1920 to 1960. The oldest house is believed to be no. 41; inside a panelled wall inside dates to the 1500’s. The history of the village is endless! Find out more in the cottage’s copy of the Illustrated History of Appledore by David Carter.

Appledore Today



You can easily spend a morning strolling around Appledore. Turning right out of the cottage takes you into the village. Follow the winding lanes and you'll find cafés, pubs, gift shops, galleries and antique shops. Wander the narrow streets, discover quirky door knockers and amusing weathervanes. Pretty painted houses are a tradition in the village. Dating back to fisherman painting their boats bright colours to be visible at sea; the left-over paint was used to paint their house.

Turn left out of the cottage, walk the length of Irsha Street, passing a couple of waterside pubs, The Beaver and The Royal George where you can access the beach. Find the smallest house in Appledore; it's called the Dolls House. Arrive at the Lifeboat Station which has some great rock pools at low tide. Appledore's long and proud tradition with lifeboats dates to 1829 – before the RNLI was even formed. Tuesday nights are practice nights if you want to see the lifeboat launched. If the boat goes out at any other time, you may hear the flare and it won't be a drill. One flare launches the small boat, two flares for the full-size boat.

During the construction of the car park in 1990, the Quay Anchor was discovered buried in river mud. It's believed to have come from an 1850's sailing ship. The Tide and Time bell was installed in 2009. Conceived to contemplate our relationship with the sea as it wraps around the coast of Britain twice a day. When the water hits the base, it signals the moment is safe for boats to cross the bar.

Appledore has a strong community spirit and there's always something going on whether it's cinema night, a performance by Appledore Drama Group, an Appledore Pirates fundraiser, or some live music in one of the pubs. The Beaver is renowned for its jazz nights!

DAYS OUT GUIDE

Where to start? Whether you choose to explore the local beaches or visit one of the many local attractions, there's something of interest for all ages and tastes in this beautiful area.

Key to symbols

00

Distance in miles from cottage



Serves food and drink



Picnic facilities



Takeaway



Shopping (excludes gift shops at attractions)



Beaches

Appledore



Explore rock pools by the Lifeboat Station, beachcomb for buried treasures along the estuary shore or enjoy the excitement of crab fishing from the Quay's slipway. Crab lines are available from the gift shop on the Quay. We use a netting bag for lemons; the crabs stay on the line without sharp hooks. Top bait tip: crabs love bacon!

Westward Ho!

2.4 miles



Combining a wide expanse of sand with a diverse beachscape, the Blue Flag beach at Westward Ho! offers something for everyone: families, sunbathers and water sports enthusiasts alike. Try the recently restored Victorian open water rock sea pool.

Saunton Sands

18.2 miles



Miles of golden beach, sand dunes and perfect waves for surfing; this beach was the idyllic backdrop location for Robbie Williams' music video 'Angels'. The iconic Art Deco Saunton Sands Hotel perches on top of the cliffs overlooking the beach. A licensed restaurant offers indoor and outdoor seating. In addition to a beach shop, hire a beach hut or deck chairs. Surf lessons are also available including board hire.

Hartland Quay

19.8 miles



Known for its dramatic scenery and imposing cliffs. Created by the tectonic collision of Africa and South America, the jagged rock formations are of particular geological interest. Observe oyster catchers and cormorants while peregrine falcons hunt the cliffs. This theatrical beach has been the location for film and television series including Top Gear, The Night Manager and Disney's Treasure Island.



Places to Visit

PLACES OF INTEREST

Clovelly

14.2 miles



This privately owned picturesque fishing village clings to a 400-foot cliff top. Having no vehicular access, the locals need to rely on donkeys and sledges! Its cobbled streets wind their way past shops, galleries and museums to the pretty ancient harbour. For those less agile or with pushchairs, there is a taxi shuttle service.

Lundy Island (National Trust)

22.2 miles



Managed by the Landmark Trust, the island lies off the coast of North Devon. Only three miles long and half a mile wide, it's an idyllic spot for walkers with plenty of wildlife to observe including puffins. Day crossings leave from Bideford three times a week and take approximately two hours. A helicopter service is also available during winter months.

Barnstaple

11.5 miles



This ancient market town situated on the River Taw has a lively social feel. The famous and historic Panier Market is host to a different market on each day of the week, varying from local produce, antiques and crafts.

Broomhill Sculpture Gardens

14.8 miles



Home to the National Sculpture Prize, Broomhill is an immersive walk through stunning woodland and gardens featuring over 200 sculptures. Along with a terrace café, the dining room offers a 3-course set menu or a 7-course tasting menu featuring locally sourced food and ingredients from their farm.

Beach Tunnels

21.9 miles

Hand carved in 1820, these four tunnels in Ilfracombe give a fascinating insight into pre-Victorian tourism with historic information throughout the site – including hilarious guides to Victorian etiquette for boys, girls and for when boating with ladies! Relax and admire the lovely scenery while children play safely in the tidal pool and explore the rock pools. Rated 3rd best beach for rock pooling in the UK by 'BBC Wildlife' magazine.

THEATRE AND WORKSHOPS

The Plough Arts Centre

10.8 miles



Situated in the heart of the community in Great Torrington, the Arts Centre provides a wide and vibrant range of high-quality arts events. With a packed annual programme including film, live events, exhibitions, workshops, and educational outreach to all age groups.

The Queen's Theatre

11.8 miles



The venue plays host to a wide variety of touring productions from classic dramas to musicals, ballet, orchestral concerts and comedians. Upstairs at The Queen's there's a café, which is open during the daytime and for pre-show dining.

GARDENS

RHS Rosemoor

11.9 miles



Gifted to the Royal Horticultural Society in 1988 by Lady Ann Berry, this wonderful garden has 65 acres to explore with a breath-taking mixture of formal and informal planting. The Kitchen Garden Restaurant offers delicious food, and the garden centre has a wide range of plants, gifts, and homeware.

Tapeley Gardens

5 miles



Home to the Christie family for two centuries, the Tapeley grounds are renowned for their beautiful gardens sitting high on a hill overlooking the River Torridge and the surrounding North Devon coastline. The vast estate includes the Italian terraces, the lake, ponds, old woodland, and fields where Tapeley's herd of Highland cattle graze. As well as a sizeable organic vegetable garden, Tapeley Park has one of the oldest permaculture gardens in the UK. House tours can be booked in advance.

Marwood Hill Gardens

15.1 miles



This magical 20-acre private garden with three lakes is set in a valley. Created in the 1950's, the gardens are a wonderful haven in which to relax. Enjoy the impressive collections of plants, shrubs and trees. Experience the peaceful atmosphere; the view across the valley from the Garden Tea Room is spectacular. You'll also find a variety of unusual plants for sale.

Clovelly Court Gardens

13.8 miles



Clovelly Court Gardens can be visited independently for a small charge or included whilst visiting the village itself. You'll find carefully tended gardens and a beautifully restored Victorian greenhouse within its old walls. Bedding plants, herbs and freshly harvested fruit and vegetables are on sale at the gardens or visitor centre. All produce is grown to organic principles.

Hartland Abbey & Gardens

17.8 miles



This wonderful estate has 3½ miles of lovely woodland walks and parkland. Peacocks, donkeys and black sheep wander the beautiful grounds with plenty to explore. The Quiz, Nature Trail and 'Malory Towers' trail are great ways to keep children entertained. Walk under a huge tree rhododendron to woodland gardens of camelias, azaleas and hydrangeas. The Gertrude Jekyll-designed Bog Garden, Fernery and 18th century walled gardens have all been restored. Visit the Summerhouse, the Gazebo, or the beach with views to Lundy Island.

Docton Mill Gardens

18.6 miles



Situated in a stunning valley, just 1000 metres from the coast. Created in the 1930s, the garden fell into disrepair in the 1970s. The Mill was renovated and the gardens cleared with extensive planting in 1980, creating a new Bog Garden. A new Magnolia Garden, Woodland Garden and greenhouse area were created at the start of the Millennium. The Wildflower Garden's theme is to make everything as natural as possible with a large variety of plants to span the seasons.

Castle Hill Gardens

11 miles



Discover 50 acres of enchanting landscape set against the beautiful 18th century Palladian house. Explore scented pathways, majestic woodland and Devon's longest Camelia hedge. Wander by the river to the Ugley Bridge, then climb to the castle for magnificent views of Exmoor, Dartmoor and beyond. Terraced walks offer parkland views and the opportunity to stroll amongst historic statues, follies and temples. Young visitors can climb on one of the oldest trees in the garden. Enjoy delicious homemade cake, cream tea or light lunch in the Castle Tearoom.

Arlington Court Gardens

(National Trust)

20.5 miles



From ever-changing displays of flowers in the formal Victorian Garden to picture-perfect grounds, the garden is beautiful whatever the season. No longer simply used for leisure purposes, it also grows produce and provides a sanctuary for wildlife including bees and rare butterflies.

ATTRACTIONS

The Big Sheep

4.6 miles



Children can enjoy the magic of a real farm combined with the fun of a theme park. With numerous hilarious live shows, all in an undercover viewing area, including the infamous sheep race and duck trials. Thrilling rides and an indoor play zone caters for all ages. The Ewe2 arena is a dedicated events space, which hosts a fantastic range of events throughout the year. There's something to entertain everyone.

The Milky Way Adventure Park

11.8 miles



An award-winning, all-weather day out for families. Home to the North Devon Bird of Prey Centre presenting both indoor and outdoor demonstrations. Ride the mini train, play mini golf, or visit the popular Sci-fi exhibition. Try the Cosmic Typhoon roller coaster, bump around on the dodgems or run around in the maze and soft play. There's also a Little Stars play centre, dedicated to those aged 0-6.

Tarka Valley Railway

11 miles



In 2008, the TVR set itself the formidable task to re-instate the old rail branch line from Torrington to Bideford. Its original track bed was covered by the well-known Tarka Trail - an outstanding cycle and walking route. With careful and sensitive planning, run entirely by volunteers, the line has been integrated with this trail. In spring 2022 the Visitor Centre opened, and the first trains are scheduled to run in late 2023.

Watermouth Castle

21.3 miles



Built in 1825, Watermouth Castle overlooks a cove and is set in beautiful gardens. Converted into a family theme park housing many quirky toys and musical instruments. The Mighty Mortier Organ, built in 1920 for the Festival of Great Britain, is the centre piece of the wonderful Water Show extravaganza. Visit the dungeon labyrinths or play the arcade machines of yesteryear. The Crazy Fountain gold and Big River Ride are a must.

Wildlife and Dinosaur Park

23.6 miles



A family-run park set in Combe Martin valley over 28 acres of spectacular gardens. In addition to wolves, sea lions, African lions, primates, penguins and more, it's known for the impressive life-sized animatronic dinosaurs. The Dinosaur Playzone promises entertaining fun whatever the weather.

HISTORICAL PLACES

North Devon Maritime Museum

0.3 miles



With lots of different maritime 'hands-on' exhibits including films, working models, a panoramic telescope, a ship's wheel, and knots to tie. Visitors can also enjoy the outside museum, visit the garden, and see the canon from HMS Weazle.

Hartland Abbey & Gardens

17.8 miles



This stately home and popular film location in a stunning valley is a step back in time. The award-winning house with fascinating interiors and decoration has been the film location for 'The Night Manager', BBC's 'Sense and Sensibility', 'The Shell Seekers', 'Rebecca' and 'Mallory Towers'. Built in the 12th century, the Abbey survived as a monastery longer than any other in the country. Henry VIII gifted the abbey to the Keeper of his Wine Cellar in 1539 and the house remains in the family. The impressive interiors span Medieval, Queen Ann, Georgian, Regency and Victorian periods. The award-winning kitchen Tea Rooms serves homemade light lunches, cream teas, and scrumptious cakes.

Arlington Court and Carriage Museum 20.5 miles (National Trust)



An unexpected jewel on the edge of Exmoor, the family estate has been held by the Chichester family for over 500 years. The house itself has an austere façade, but inside the cosy rooms demonstrate a homely, family atmosphere. The collection consists of treasures for all tastes from model ships to shells collected over several generations.

The Carriage Museum in the stables has a vehicle for every occasion from cradle to grave. Over 40 vehicles are on display from elegant coaches used for state occasions to humble carts that would have carried servants.

Museum of Barnstaple and North Devon 11.8 miles.



Established in 1989 to bring together collections from the Barnstaple Literary and Scientific Institution (1845) and the North Devon Athenaeum (1889). Notable collections include significant local geology and minerals, local industries, and the regimental collection of the Royal Devon Yeomanry.

CYCLING AND WALKS

The Tarka Trail (Bideford Cycle Hire) 4.2 miles



Inspired by the route travelled by Tarka the Otter, this is the UK's longest traffic-free walking and cycling path. 180 miles of disused railway tracks takes you through unspoiled countryside, dramatic sea cliffs and beautiful beaches. Bideford Bicycle Hire has bikes for adults, children, buggies and trailers for babies and toddlers. Starting from Bideford, you can either head towards Barnstaple or Weare Giffard.

Northam Burrows Country Park 2.5 miles

A Country Park with a diverse range of natural habitats, including salt marsh, open grassland, rocky shores and sand dunes. It's a haven for all kinds of wildlife from vivid lichens to coastal birds. Start in Appledore, walk through Northam, around the Burrows between the dunes and sea. Follow the coast back to Appledore. It takes about an hour to get to the Burrows following this route. If you prefer something slightly shorter, cut through Diddiwell and miss out Northam.

Braunton Burrows 18.2 miles

Ideal for those who just want to disappear for the day with no distractions. You'll find car parks where the Burrows meet the estuary. From there, it's up to you where you decide to explore. Drop down onto the beach and follow the water to the wrecked boat. Crow Point offers wonderful views of Instow, Westward Ho! And Appledore. Or head towards the sea onto the far end of Saunton Sands. There's plenty of dunes to be explored and you may even come across the old WW2 tank!

Fremington Quay 9.8 miles



Fremington was once an important, busy port with goods arriving and departing from all over the world. Situated on the Tarka Trail and enjoying panoramic views of the River Taw, Fremington Quay is an ideal place to either start your journey or take a well-earned break if you're heading towards Barnstaple. Aside from the free heritage museum, there is also a café serving breakfast, lunch and afternoon tea.

Hartland to Speke's Mill Mouth and Waterfall 19.8 miles

The hanging valleys and waterfalls at Speke's Mill are well worth discovering. Start at Hartland Quay where the sea collides with the rocks. Walk along the coast; the streams running down from the moorland above fall dramatically to the shore in breath-taking fashion. For a bonus, the return route takes in St Nectan's Church in Stoke village, sometimes referred to as 'The Cathedral of North Devon'.

GOLF CLUBS

The Royal North Devon Golf Club

2 miles



Founded in 1864, it's the oldest golf course in the country and is regarded as the St Andrews of the South. The golf course is as tough as any of the more famous links layouts and has recently been placed in Golf World's "Top 100 courses in the World".

Saunton Golf Club

18.5 miles



Another old course, formed in 1897. Despite the number of new courses nationwide, Saunton's two courses stand up well to the competition. The East Course is ranked No 95 in the Golf World 'Top 100 Courses in the World' and No 22 in the Golf World "Top Courses in England". The West Course is No 71 in the Golf World "Top Courses in England".

Great Torrington Golf Club

11.2 miles



This 9-hole heathland/parkland course also has history having been formed in 1895. Routed over a pleasantly sloping site that measures 25 acres, this small, inclusive club has been awarded Junior Club of the Year 2022 by the Golf Foundation.

Portmore Golf Park

12.3 miles



Set on the outskirts of Barnstaple with 2 courses on offer: a 9 hole and 18 holes. Both courses and clubhouse are open to both members and visitors and they pride themselves on being a friendly club. There's also a TopTracer driving range which is floodlit and undercover as well as putting green.

Ilfracombe Golf Club

24.5 miles



Located in an area of outstanding beauty and boasts one of the most stunning locations in the South West. Golfers can "see the sea from every tee". Due to its own micro-climate and excellent course maintenance the club can welcome guests all year round.

SPORT AND LEISURE

Torridge Leisure Centre

2 miles

A friendly and welcoming centre offering an inclusive wellness facility. Facilities include a 25m swimming pool, learner pool and aqua classes plus a fitness studio and modern dance studio. Non-members are welcome.

Skern Lodge

0.6 miles



Skern welcomes families, couples, and individuals to enjoy their activities and facilities. With activity days to book from abseiling and archery to powerboating and kayaking. In addition to the range of scheduled activities, guests can create a bespoke activity experience to suit individual preferences.

North Devon Surf School

2.5 miles



A family business graded as a “Centre of Excellence” by the UK surfing governing body - the highest rating possible covering safety, coaching, equipment and facilities. With heated changing rooms, toilets, hot shower, and a wood fired Pizza Café for hungry surfers.

North Devon Wake Park

11.8 miles



Situated on private lakes in beautiful countryside, it has perfect learning conditions. Activities include wakeboarding, ringo rides, paddle boarding and open water swimming. The Aquapark offers a range of inflatable slides, climbing frames and a variety of obstacles. A great activity for families: however, children need to be over the age of 6.

Rib Ride

0.8 miles

An exhilarating experience as you explore the beautiful coastline and diverse wildlife of North Devon on board The Nightingale. Whether you're looking for excitement or a relaxed tour, they offer four routes ranging from 35 minutes to 2 hours.

Appledore Ferry

0.8 miles

There has been a ferry of some kind between Appledore and Instow for centuries. Currently licensed to carry 12 passengers and able to take buggies and bicycles. The ferry runs at high tide from April until October from the Quay.

SHOPPING

Appledore

0.8 miles



The local area is renowned as a haven for creativity. Numerous independent galleries and artisan workshops offer a wonderfully eclectic mix of arts and crafts. Some artists exhibit in shops and markets, others have studios in their own front room. In addition, there are several unusual gift shops and a delicious chocolate shop. There's also a choice of antique shops where you can browse furniture and ornaments from a bygone era.

Affinity Outlet Shopping

5.6 miles



Explore over 28 famous names offering up to 50% off everyday prices. Discover a fantastic range of men's, women's and children's fashions and footwear plus gifts, homeware and accessories. There's also a selection of places to eat and drink.

Dartington Crystal

10.9 miles



The factory experience invites you to observe the process of turning glass into handcrafted luxury items. Visitors can watch the skilled team bring their design to life. Visitors can find great savings on crystal and glass in the spectacular glass shop.

Barnstaple Panier Market

11.5 miles



Pannier markets take their name from the panniers that traders once used to carry homegrown or homemade goods to market on the backs of animals.

Monday: Craft and General market (April – Christmas)

Tuesday: General Market

Wednesday: Antiques, collectables, and books

Thursday: Craft and General market (open all year)

Friday: General Market

Saturday: General Market

EATING OUT AND TAKEAWAYS

Restaurants can get busy during peak season so it's best to book a table ahead.

[The Royal George](#)

0.2 miles



An award-winning restaurant serving a modern British menu serving lunch and dinner. Lovely estuary views make an ambient setting for diners with a more adventurous palate.

[Beaver Inn](#)

0.2 miles



Renowned for its variety of locally caught fish specials and a vast selection of local real ales. Family-friendly pub serving meals and bar snacks with views overlooking the estuary.

[The Seagate](#)

0.7 miles



Offering guests a hearty, all-day dining experience. Be it a traditional pub classic, a scrumptious roast or one of their fresh fish dishes, the menu is sure to delight whether you dine in the cosy pub or in the garden on the Quay.

[The Flame Factory](#)

0.8 miles



Bringing wood-fired pizza, flame-grilled burgers and rare-bred Clovelly Longhorn steaks to the historic Appledore Quay side. Eat in or take out.

[The Yard](#)

0.8 miles



A wine bar featuring craft beers from brilliant local micro-breweries, great wines from local vineyards and naturally good local food. The menu offers a mixture of Thai and healthy fusion. Eat in the eclectic wine bar or the attractive garden space.

[The Royal Plaice](#)

0.8 miles



A family run business taking pride in the quality of their food, with local-line caught bass, skate wings and scallops being some of their specialities. Using their own special recipe batter mix, producing a delicious light and crispy batter. Their homemade tartare sauce is the perfect accompaniment.

Coffee Cabin

0.7 miles



A small independent coffee shop offering delicious homemade cakes and light lunches.

Market Street Kitchen

0.8 miles



A welcoming café serving Devon breakfasts, light lunches and a tempting selection of cakes, bakes, and cream teas. Eat indoors or in their stunning secret garden.

John's of Appledore

0.8 miles



The café in the Deli. Offers homemade dishes from local produce including breakfast, lunch and afternoon tea. Their picnic menu makes days out easy and convenient.

Sylvester's Fish and Chips

0.7 miles



Cooked fresh to order with friendly service. Be sure to get there early especially at weekends.

Candy's Cuisine

0.7 miles



Delicious authentic Taiwanese pop-up takeaway on the Quay and local area.

The Appledore Bakery

0.7 miles



Offering a home-made menu, mainly sourdough themed with bread staples like doorstep toast and pizza bagels along with sourdough brownies, muffins, and rock cakes. Serving hot drinks and filled bagels and sandwiches, they have some outdoor seating but it's ideal for grabbing a picnic on your way out of the village.

Hocking's Ice Cream

0.7 miles



A long-established family business manufacturing and retailing their own original vanilla dairy ice cream. Using an old recipe handed down from previous generations, their ice cream is sold from their own vans throughout North Devon. We're fortunate enough to have a van on the Quay from March to October. Ice creams and freezer packs available. We think it's the best ice cream in the world but try it for yourself and see what you think.

USEFUL TELEPHONE NUMBERS

POLICE

Non-emergency number 101
Barnstaple Police, Seven Brethren,
Barnstaple EX31 2AS

HOSPITAL

North Devon District Hospital
Raleigh Park
Barnstaple
EX31 4JB
01271 322577

DOCTORS

Northam Surgery
Bay View Road
Northam
Bideford EX39 1AZ
01237 474994

DENTIST

My Dentist
Bay View Road
Northam
EX39 1AY
01237 476786

TAXIS

All Areas Taxis
01237 470211

Number 6 Taxis
01237 666666

Scott's Taxis
01237 421487

TRAIN STATION

Nearest train station is in Barnstaple
approximately 20-minute drive away.
Trains run from Barnstaple to Exeter,
linking with all major networks.

BUS STOP

There are buses from Appledore to
Bideford, Northam, Instow,
Westward Ho! Fremington & Barnstaple.

TOURIST INFORMATION CENTRE

The Burton Art Gallery
Kingsley Road
Bideford
EX39 2QQ

POST OFFICE

4 The Quay
Bideford
EX39 1QS
01237 429065

NEAREST SHOPS

John's of Appledore
Morrisons: Kingsley Rd, Bideford
EX39 2LG
Asda: Clovelly Rd, Bideford EX39 3QU
Tesco: Manteo Way, Bideford EX39 4AJ
Sainsburys: Roundswell Business Park
Roundswell, Barnstaple EX31 3N

WHAT'S ON GUIDE

There are too many events to mention all of them here! Details of craft workshops can be found at [North Devon Craft Fairs & Craft Workshops](#) page on Facebook.

JANUARY

1 st – 31 st	Winter Sculpture Exhibition – RHS Rosemoor
4 th	Appledore farmer's market – Churchfields car park
16 th , 23 rd , 30 th	Stained Glass Workshops – Westside Warehouse, Bideford
20 th	Quiz Night – The Old Foundry, Bideford

FEBRUARY

1 st	Appledore farmer's market – Churchfields car park
15 th – 23 rd	Guess How Much I Love You event – RHS Rosemoor
17 th	Quiz Night – The Old Foundry, Bideford
25 th	Sip and Paint workshop – The Seagate

MARCH

1 st	Appledore farmer's market – Churchfields car park
1 st – 2 nd	RHS Rosemoor community open weekend (Entry: £1)
16 th	Mothering Sunday with daffodils – Hartland Abbey
29 th	RNLI SOS Day & Sausage and Sizzle - Yacht Club, Instow

APRIL

2 nd	Appledore/Instow Ferry re-starts
5 th	Appledore farmer's market – The Quay
5 th	Bideford Eat Festival – Quay side
13 th	Hartland Abbey Bluebell Sunday
20 th /21 st	Easter Egg Hunt – Hartland Abbey

MAY

3 rd	Appledore farmer's market – The Quay
4 th	Lifeboat day – Appledore Quay
17 th	Pigstock Family Festival – The Big Sheep
23 rd & 26 th	Continental Market – Bideford
25 th	Seaweed Festival – Clovelly
27 th	Appledore RNLI 200 Cruise – departing Bideford Quay
29 th – 31 st	Appledore Music Festival

JUNE

1 st	Appledore Music Festival
7 th	Appledore farmer's market – The Quay
14 th	The Falklands challenge: 10-mile 'Yomp' - Instow beach
24 th	Armed Forces Day, Rock park, Barnstaple

JULY

5 th	Appledore farmer's market – The Quay
6 th	Bideford Soapbox Derby
20 th	Appledore RNLI BBQ- Appledore Quay
20 th	Clovelly maritime festival
20 th	Cardboard boat race, Bideford Water Festival
28 th	Woolsery agricultural show - Clovelly

AUGUST

2 nd	Appledore farmer's market – The Quay
2 nd	Gig Regatta – Clovelly
3 rd	Appledore and Instow Regatta
6 th	North Devon Show
10 th	Appledore Carnival
10 th	Festival of Transport – Victoria Park, Bideford
16 th	Tea at Tapeley – Tapeley Park
15 th – 17 th	RHS Rosemoor Flower Show
23 rd	MG Mini run parade
24 th	Last Night of the Proms – Appledore Quay
31 st	Lobster and Crab Festival - Clovelly
TBC	World Crabbing Championship

SEPTEMBER

6 th	Appledore farmer's market – The Quay
7 th	Plant Heritage Autumn Plant Fair – RHS Rosemoor
12 th – 21 st	Appledore Book Festival (Patron Jeremy Vine)
13 th	Clovelly to Appledore walk (RNLI fundraising event)

OCTOBER

4 th	Appledore farmer's market – The Quay
4 th – 5 th	Festival of Flavours – RHS Rosemoor
4 th – 5 th	Art Show – North Devon Yacht Club
19 th	North Devon Foodfest – Barnstaple Panier Market

NOVEMBER

1 st	Appledore farmer's market – The Quay 19 th
5 th	Firework display – The Big Sheep
16 th	Herring festival – Clovelly Village
29 th	Appledore bonfire and fireworks
30 th	Christmas Lights – Clovelly Village

DECEMBER

TBC	Carol Concert – Lifeboat station
4 th	Appledore Christmas light switch-on
6 th	Appledore farmer's market – The Quay
22 nd	Appledore Torchlit procession
TBC	Carols by candlelight

Thank you for choosing

Catboat Cottage

We often find it's the little things that make the biggest difference.

We want your stay to be a memorable one for all the right reasons. We constantly strive to improve our facilities and guest experience within the constraints of a 200-year-old building, so we do welcome your feedback.

If you find something that is not as you would expect it to be, you need anything, or you just have a suggestion, please get in touch with Holly on 0776 666 2407 or catboatcottage@gmail.com

Returning guests' loyalty scheme

We value our returning guests, and everyone loves a special offer. All guests staying Catboat Cottage will receive 10% discount on their next booking, **each** time they book direct via our website: www.catboatcottage.co.uk
Use code: Return10

In addition, anyone who stays at Catboat Cottage will be able to book next year's dates at this year's prices up until December 31st.

